

## SHELTER

### EMF



□ EMF type shelter is intended for telecommunication sites to provide the operating conditions for the equipment specific to that application and which are placed inside the shelter.

#### Dimensions

Outdoor / Indoor dimensions			Effective interior area (m <sup>2</sup> )	Interior capacity (m <sup>3</sup> )	Weight (kg)	Dimensions of	
L(mm)	l(mm)	H(mm)				- Main entrance door	- Emergency door
						l(mm)	H(mm)
3038	1588	2710	~4,2	~10,5	Max. 1100	800	2200
2900	1450	2500				1000	2200

#### Electric characteristics

Power supply voltage	Installed capacity						Circuit protections			
	Lighting			Air conditioning		Energy system	Maintenance outlet	Short-circuit	Over load	Differential
	Indoor (fluorescent)	Exterior (fluorescent)	Emergency	Heating	Ventilation					
230 Vca	2x36W	1x10W	8W	1500W	1800WA	7400VA	(2x10A) 2300VA	Yes	Yes	Yes

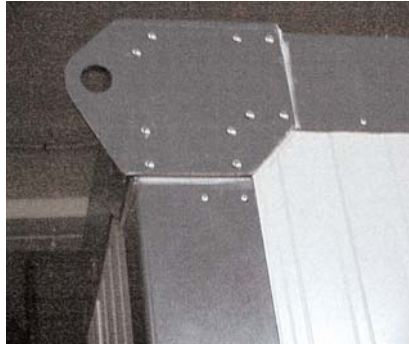
#### Safe loading

Detection and warning			
Smoke	Efractie		Overheating
	Main door	Emergency door	
Yes	Yes	Yes	Yes



- The construction of the shelter **EMF** has a parallelepiped shape. The strength structure consists of steel profiles, which support the floor, walls, roof and two doors.

- The hip roof is equipped with eaves in doors area and lifting eyes for easy handling of the shelter during transportation and emplacement.



- Heating installation

- Alarm system



- Earthing system

# SHELTERS WITH MONOBLOCK CONSTRUCTION