

# KWh METERS

## CSMCom - Meter Data Communication Program- version 2.0.0

### Scope

- The CSMCom Program is an application of 32 bits intended for automatic data communication and transfer with the singlephase multi-tariff watt-hour meters, CSM AXX and CSM BXX types (ELECTROMAGNETICA manufacturing) or with the Hand Held Unit, in order to take over the consumer's rating information.
- The application is meant also for the data transfer with the CSM CXX type meters (ELECTROMAGNETICA model or any other model) by means of Hand Held Unit provided that initial data be entered the application database manually.
- The application also implements commands for a database establishment and management, database that contains information referring to each subscriber.

### System Requirements

- The version 2.0.0 of the CSMCom.exe Program can be installed and run on systems with following minimal configuration:
  - Pentium Processor of 100MHz
  - 8MB RAM
  - free space needed on HDD: min. 1.83MB
  - standard serial port available for the application
  - floppy disk unit of 3.5"
  - OS: Windows'95, Windows'98, Windows 2000, Windows NT, WindowsXP.

### Technical Characteristics

- 32 bits application with an interface accessible to user in windows form.
- commands available to user through the main menu or by means of the buttons located at the upper side of the main window (Fig.1).

- program protection against the access of non-authorized persons by two password levels of different priorities.
- safety of communication with meters or Hand Held Unit provided by access passwords.

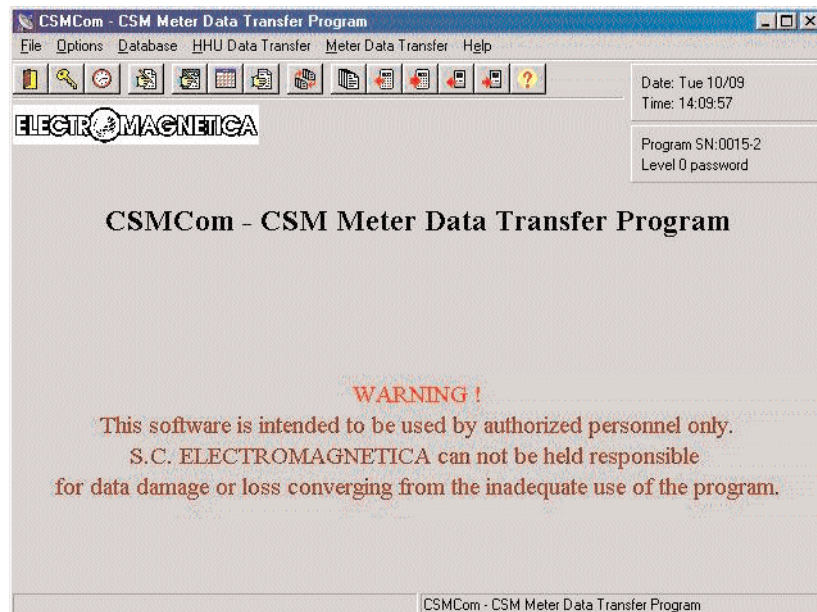
### Functions

- Communication with CSM AXX and BXX type meters accomplished by PC serial communication port, using the optical head for reading attached to the optical port of the meter and the serial communication cable.
- Data transfer with CSM CXX type meter or any other similar model by means of the Hand Held Unit
- Communication protocols:
  - CSM BXX meter reading according to the D communication protocol (IEC 1107)
  - CSM AXX meter index reading according to the D communication protocol and other parameters reading and data registering into the meter using a command subset of C communication protocol (IEC 1107).

### Communication with Hand Held Unit (HHU):

- Fulfills data reading/registration of/in Hand Held Unit / Meter registering, as per the own producer's protocol.
- Protection against non-authorized access to the data stored in HHU is provided by the access password.

Fig.1



ISO 9001

ELECTROMAGNETICA S.A.  
Bucharest Romania  
266-268 Calea Rahovei  
Phone:++4021 404 21 47  
Fax:++4021 404 21 48  
<http://www.electromagnetica.ro>

ELECTROMAGNETICA

# KWh METERS

## Subscribers' database management

- functions for the management of the internal database of the program are provided:
- display / change of registration corresponding to each subscriber;
- possibility of new subscribers entry or deleting one or more existent registrations;
- commands for subscriber search, sorting or selection following different criteria.

- The displayed data depend on the meter type corresponding to each subscriber;
- The data can be manually changed and saved by the user.

## Definition of rating parameters set:

- Up to 8 different sets of rating parameters used for programming the operating mode of CSM AXX type meters can be defined (Fig.3).
- Each set of parameters contains information regarding the rating type, rating parameters after time and rating parameters after power.

## Subscribers' stored data display/change

- It is provided the possibility of quick display of each subscriber information from the internal database (Fig.2).

Fig.2

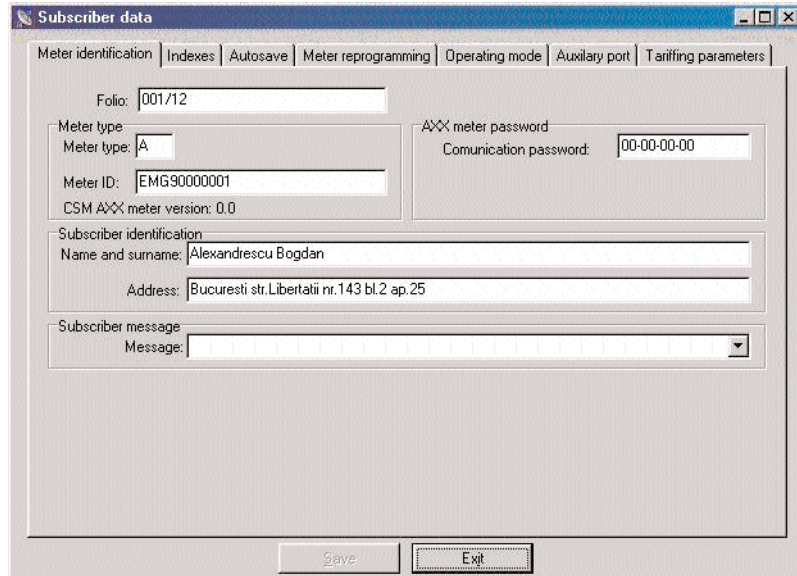
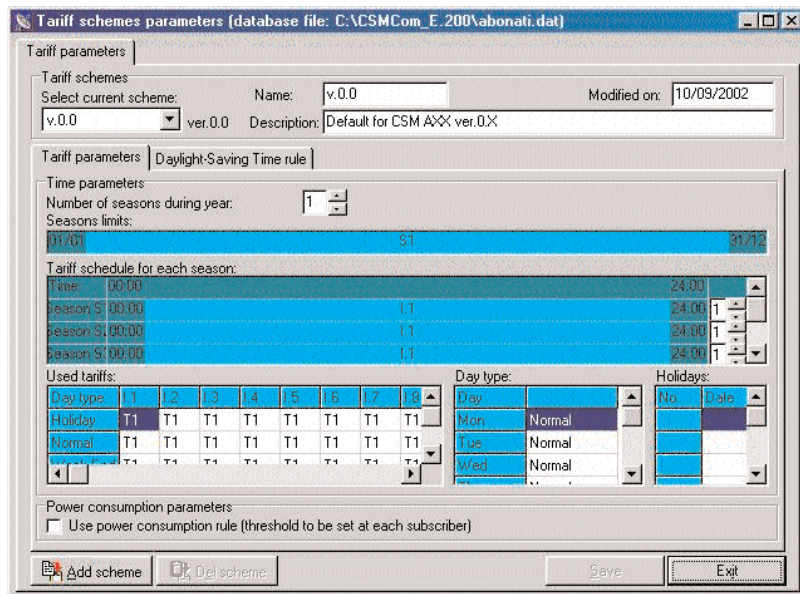


Fig.3



## Other characteristics:

- Functions of program configuration
- Selectable database file (it is possible to use more distinct subscribers files)
- Possibility of database file conversion to text file in a table format that allows the import in the framework of other programs (ex. Microsoft Excel).

- The compatibility with the previous versions of the program is provided (the program furnishes conversion functions of old formats of subscriber data files).
- The program provides help depending on context by pressing push button F1 or by command "Help".

